

Student Guide

Downloading and applying Free Web Fonts



There are numerous, even hundreds of sources for web fonts. Some are font links - linking a font used on a web page for a server. Others are downloadable fonts that can be placed directly in the css file and accessed via the @font-face element.

Font Squirrel is by far the best because not only are the fonts free, but the site provides the font in numerous formats as well as css code.

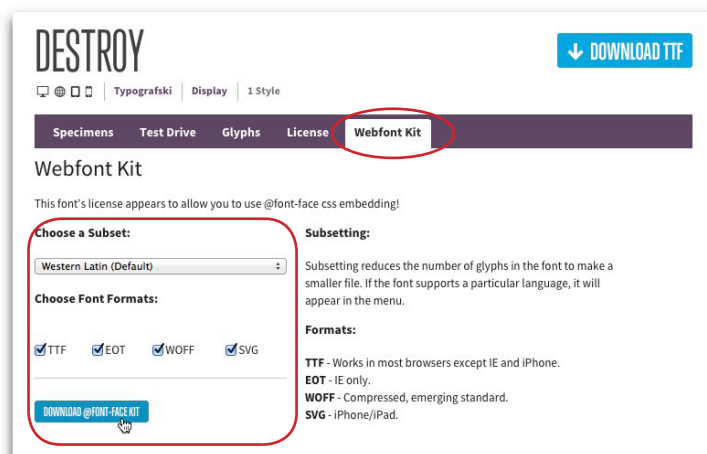
In fontsquirrel you can search for a specific style and browse to find the font you want to use.



When you find the font you want to use, click on the font to view.

Do NOT click on DOWNLOAD TTF.

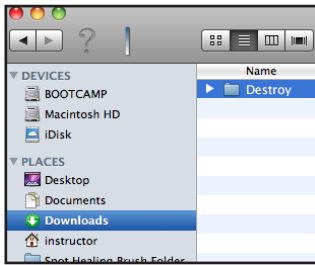
TTF and OTF fonts will NOT work for web!



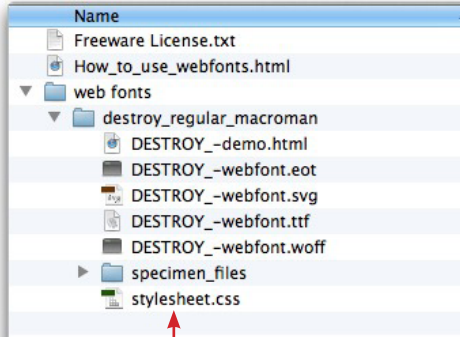
Fonts that you use for web are contained on a Webfont Kit. Not all fonts in FontSquirrel has a webfont kit. The webfont kit must contain the following subset fonts:

- .eot file for display on Internet Explorer
- .svg file for display on mobile devices
- .ttf for display in standard browsers
- .woff is the emerging standard

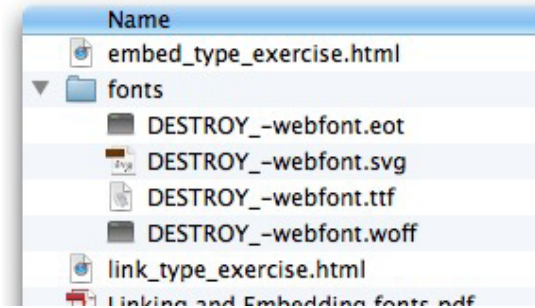
Make sure all of these are selected. Click on Download @font-face Kit



The font kit will download into your Downloads folder. From there, move the folder to your Desktop, Documents or better yet - a folder entitled Web Fonts where you will keep all your free downloaded fonts.



Inside the Font Kit folder are several files. You really don't need all of these for your website. We will be linking to these fonts (similar to linking to images on your web page.) So... we will create a fonts folder in our website folder. From the font folder that you downloaded, copy the four font files needed into the website's fonts folder: .eot, svg, ttf, and woff files.



```
@font-face {
  font-family: 'DestroyRegular';
  src: url('DESTROY_-webfont.eot');
  src: url('DESTROY_-webfont.eot?#iefix') format('embed'),
  url('DESTROY_-webfont.woff') format('woff'),
  url('DESTROY_-webfont.ttf') format('truetype'),
  url('DESTROY_-webfont.svg#DestroyRegular') format('svg');
  font-weight: normal;
  font-style: normal;
}
```

The downloaded font folder contains a stylesheet.css. Open this css in a text editor. Copy the @font-face CSS rule and paste into your website CSS.

```
@font-face {
  font-family: 'destroyregular';
  src: url('fonts/DESTROY_-webfont.eot');
  src: url('fonts/DESTROY_-webfont.eot?#iefix')
  url('fonts/DESTROY_-webfont.woff') format('woff')
  url('fonts/DESTROY_-webfont.ttf') format('truetype')
  url('fonts/DESTROY_-webfont.svg#destroyregular') format('svg');
  font-weight: normal;
  font-style: normal;
}
```

Remember that you copied the fonts into the fonts folder? Now we need to add that folder to the pathname of the fonts.

```
h1{ font-family:'destroyregular', sans serif;
  font-size:50px;
  line-height:100px;
  font-weight:normal;
  text-align:center;
}
```

Add the font as the font-family property to the desired element. Remember that the font must be inside quote marks.

Remember to test in a browser. If using Dreamweaver, click on the Live button.

love