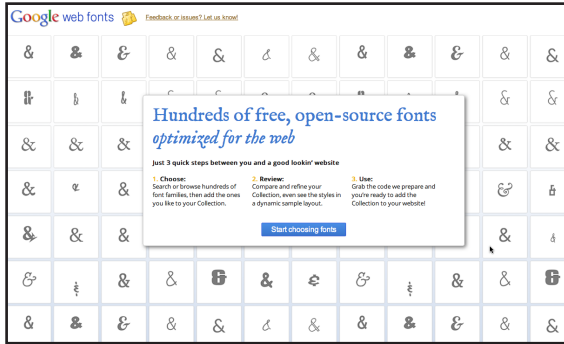


# Student Guide

## Linking Web Fonts



Google webfonts is a free font-hosting site. Fonts are not downloaded, but linked to the google site directly from your site. Google only hosts creative commons licensed fonts. As such the font choices are rather limited. Other font hosting services exist but most are subscription or fee based.

<http://www.google.com/webfonts>

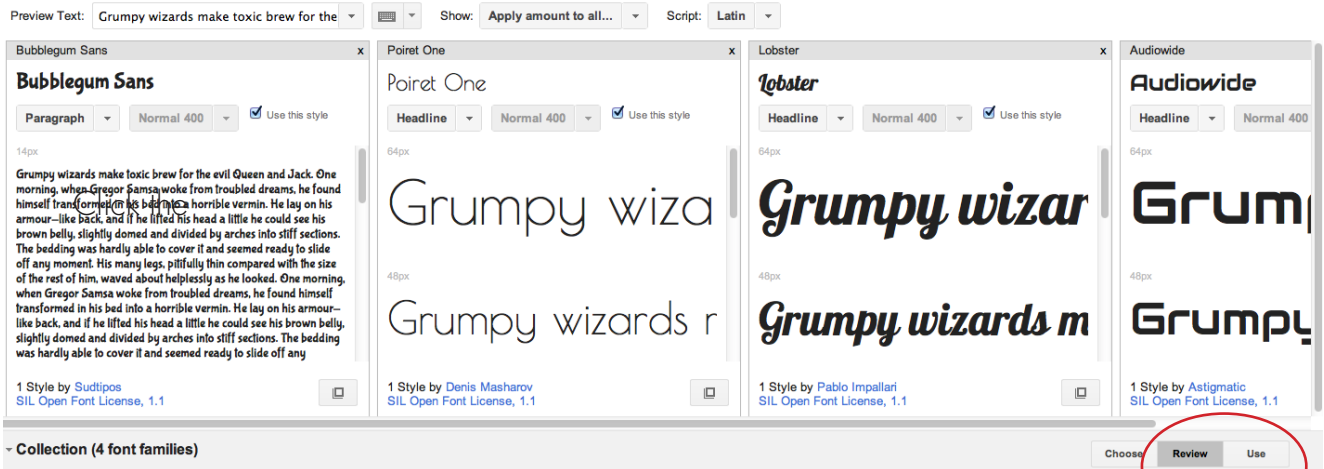


Fonts can be displayed as a word, a full sentence, or as a paragraph. This feature allows you to really see how the font will display, and allow you to make judgements regarding text and copy display.

When you find the font you want, click on the Add to Collection button.



You can add as many fonts as you like to the collection.



Click the Review button in the lower right to review all of your font choices. Preview the fonts in paragraph, headline, or Word forms.

When you are happy with your choices click the Use button.

1. Choose the styles you want:

- Bubblegum Sans
  - Normal 400
- Poiret One
  - Normal 400
- Lobster
  - Normal 400
- Audiowide
  - Normal 400

Grumpy wizards make toxic brew for the evil Queen and King

Grumpy wizards make toxic brew for the evil Queen and King

Grumpy wizards make toxic brew for the evil Queen and King

Grumpy wizards make toxic brew for the evil Queen and King

Page Load

54

Impact on page load time

*Tip:* Using many font styles can slow down your webpage, so only select the font styles that you actually need on your webpage.

This panel lists all the fonts that you added to the collection. You do not have to use all the fonts you added. Check the fonts you want to use. Note that the more fonts you use, the longer the page load time.

Standard
@import
Javascript

3. Add this code to your website:

```
<link href='http://fonts.googleapis.com/css?family=Bubblegum+Sans|Poiret+One|Lobster|Audiowide' rel='stylesheet' type='text/css'>
```

Scroll down to the link code. Copy and paste this full pathname into the Head section of your web page. (If you are using an embedded CSS, the link will be above the <style = "text/css">)

```
font-family: 'Bubblegum Sans', cursive;

font-family: 'Poiret One', cursive;

font-family: 'Lobster', cursive;

font-family: 'Audiowide', cursive;
```

Scroll down further and google provides the font-family properties to add to the CSS rules..

```
h3{ font-family: 'Antic', sans-serif;
font-size:120px;
line-height:200px;
margin-top:20px;
font-weight:normal;
text-align:center;
}
```

Specify the font family in the element of the html code Remember to provide a font-stack in case the font cannot be accessed from the browser..

Remember to TEST your site in various browsers to ensure the font is working.